

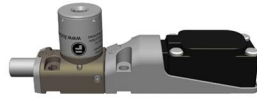
Power Isolation

Mechanical Bolt Interlock



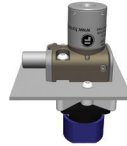
- BM BM1 » BM10 (Standard)
- BMS BMS1 » BMS5 (Full Stainless Steel)

Bolt Interlock with Limit Switch



- BML BML1 » BML4 (Standard)
- BMSL BMSL1 » BMSL4 (Full Stainless Steel)

Bolt Interlock with Switch



- BMR BMR1 » BMR10 (Standard)
- BMSR BMSR1 » BMSR5 (Full Stainless Steel)

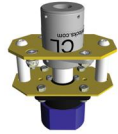
Circuit Breakers



- CLIN-AC090AB ABB (SACE EMAX)
- CLIN-MC090MG Merlin Gerin (Masterpact)
- CLIN-X002 Siemens (3WL)

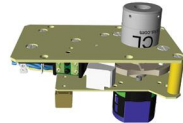
Control Isolation

Key Switch



- S Back of Board
- SE In Enclosure

Solenoid Controlled Key Switch



- SS-B SS1-B » SS8-B (Back of Board)
- SS-F SS1-F » SS8-F (In Enclosure)

ATEX Key Switch



- FLP In Enclosure

ATEX Solenoid Controlled Key Switch



- EEXSS1 In Enclosure

Solenoid Controlled Key Switch Unit



- SLS SLS1 » SLS6

Electronic Time Delay Unit



- TD TD1 » TD3
- TR TR1 » TR3
- TS TS1 » TS3

Voltage Sensing Unit



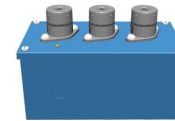
- VS In Enclosure

Knob Operated Switch Control Unit



- ODS ODS1 » ODS8 (In Enclosure)

Key Operated Switch Control Unit



- ODL ODL1 » ODL8 (In Enclosure)

Key Exchange

Modular Key Exchange Unit



- XM XM2 » XM10 (Standard)
- XMS XMS2 » XMS5 (Full Stainless Steel)

Modular Key Exchange Unit with Switch(es)



- XMR XMR1 » XMR10 (Standard)
- XMSR XMSR1 » XMSR5 (Full Stainless Steel)

Accessories

Extension Module



- XMA Standard
- XMSA Full Stainless Steel

Back of Board Mounting Kit



- MBOB

Dustcovers



- CLDC Stainless Steel Dustcover



- PLDC Padlockable Dustcover

Lock-Out Hasps



- LOS3 Scissor Hasp
- LOS3C Scissor Hasp c/w cable

Door Locks

Single Door Interlock



- DM1 Standard
- DMS1 Full Stainless Steel

Multiple Modular Door Interlock



- DM DM2 » DM10 (Standard)
- DMS DMS2 » DMS5 (Full Stainless Steel)

Actuators

Fixed Actuator



- DM-F

Handle Actuator



- DM-H

Handle Actuator (spring)



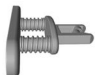
- DM-A

Self Aligning Actuator



- DM-S

Compressible Actuator



- DM-C